



MEDIUM
STUDENT

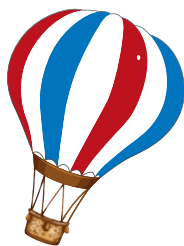
1 JUST BE HAPPY!

Luke 19:28-44

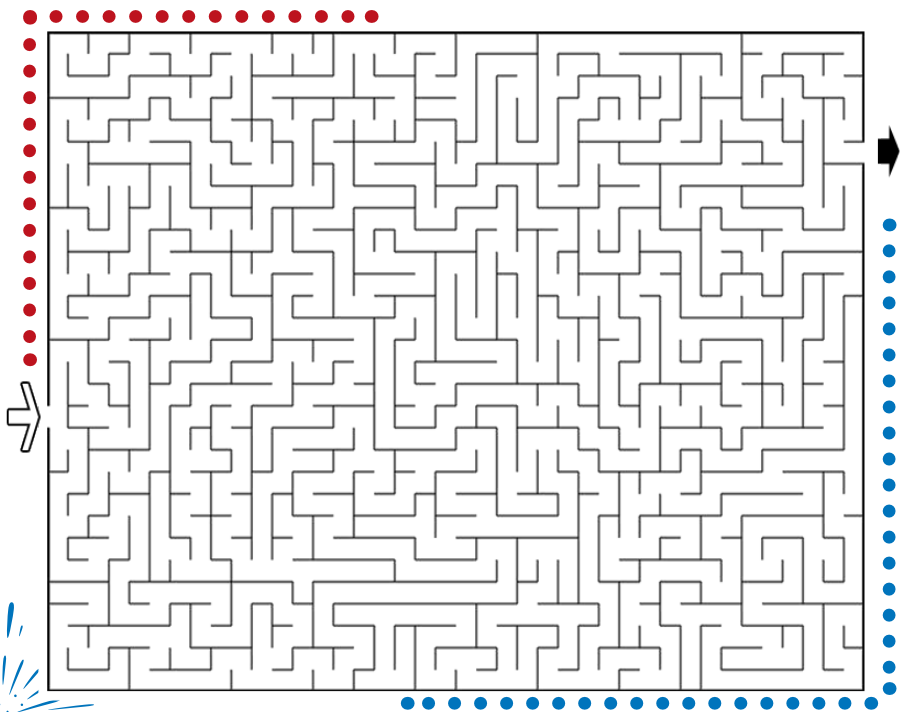
MEMORIZE

Proverbs 15:13 (NIV)

"A happy heart makes the face
cheerful, but heartache
crushes the spirit."



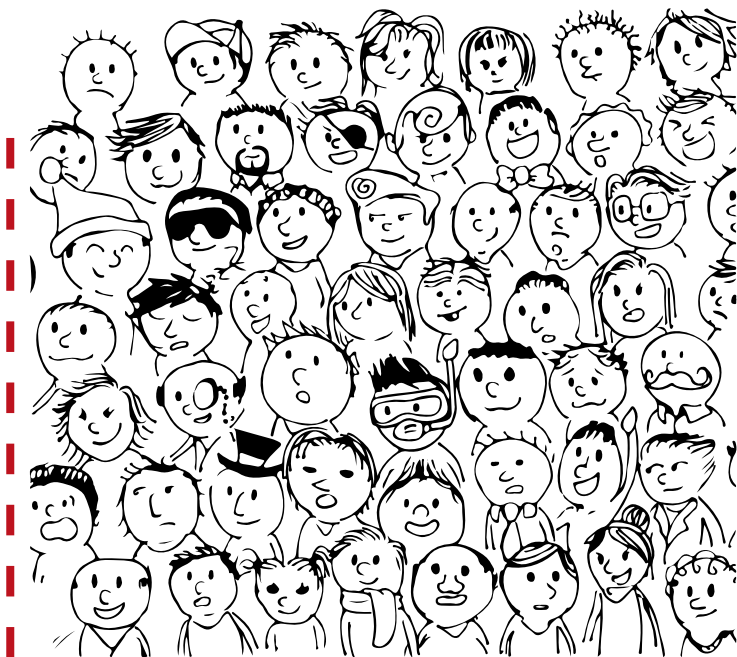
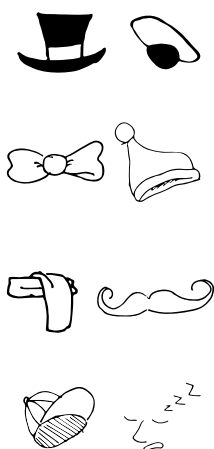
Find the way out of
the maze.



D	O	N	K	E	E	C	P	I	G	H	O	R	S	E
T	E	E	T	H	G	O	P	P	E	N	Y	E	C	T
A	C	L	A	E	N	N	A	R	C	N	L	L	M	E
D	I	S	S	A	C	T	I	F	A	C	T	I	O	N
W	N	A	T	L	X	E	G	R	A	I	Q	R	D	O
O	I	T	U	I	Y	N	P	R	A	Z	S	O	Y	U
R	A	P	F	N	H	T	I	A	F	P	N	E	Q	G
S	L	R	F	G	Z	M	P	R	A	K	M	L	U	H
H	P	A	L	M	L	E	A	V	E	S	Z	O	P	T
I	M	Y	S	A	T	N	Z	Y	G	O	I	N	C	R
P	O	Q	U	W	I	T	N	E	S	S	O	U	G	H
T	C	S	N	O	I	S	S	E	S	S	O	P	I	E

DISSATISFACTION
 ENOUGH
 PALM LEAVES
 ENTRY
 DONKEY
 COMPARING
 CONTENTMENT
 PRAISE
 FAITH
 COMPLAIN
 POSSESSIONS
 MIRACLES
 HEALING
 WITNESS

Find in the public these circus items.

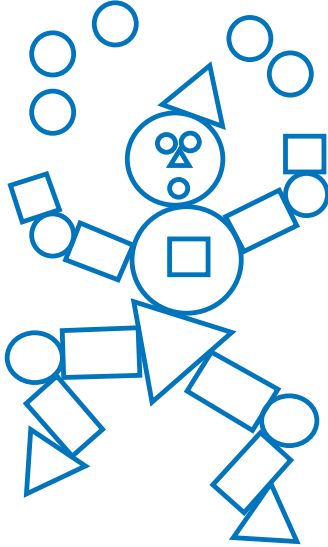


2

JUST DO IT!

Luke 2:34, 54-62

Count the figures and color them









There is a number that does not repeat. Which?

There is a number that is repeated three times, what is it?

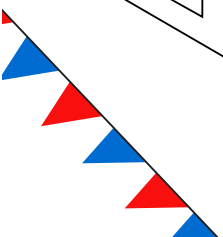
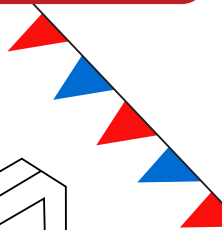
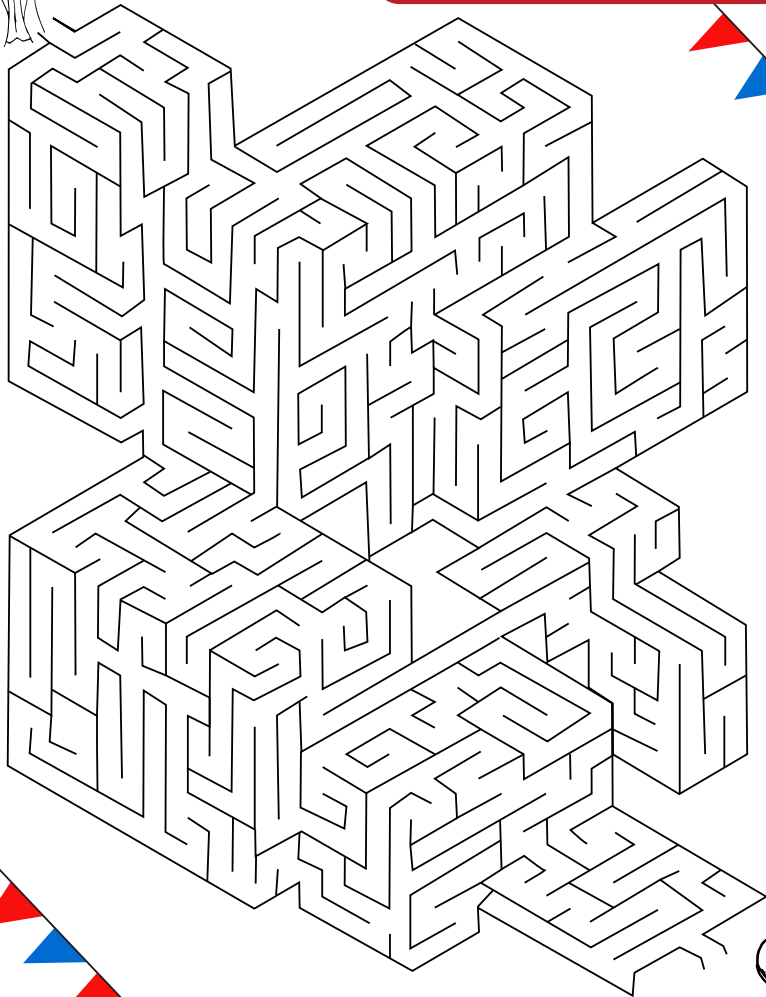
There is a number that is repeated the most times, what is it?

3	12	2	4	9	5	1	7
12	5	8	6	7	3	13	9
8	1	3	10	4	2	12	6
6	3	2	5	2	1	2	4
4	11	8	2	6	12	3	5
9	2	7	3	5	4	6	8
7	4	9	7	1	5	2	10
10	5	4	11	3	6	9	2



MEMORIZE
Proverbs 30:5 (NIV)
"Every word of God is
flawless; he is a shield to
those who take refuge in him."

Find the way out of
the maze.



3 JUST BE YOU!

Luke 23:1-4, 13-16

MEMORIZE

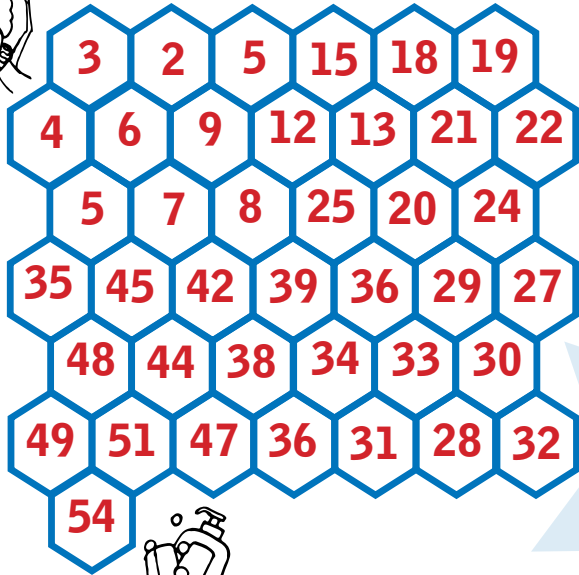
Isaiah 43:4 "Since you are precious and honored in my sight, and because I love you."



Find the 8 differences and mark them with a circle, then color the pictures



Help the clown to wash his face of makeup following the numbers 3 by 3. From 3 to 54.



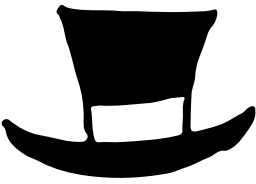
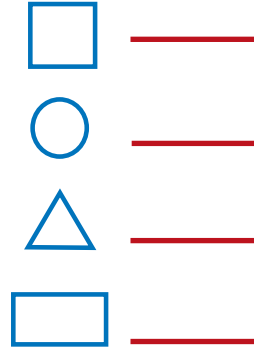
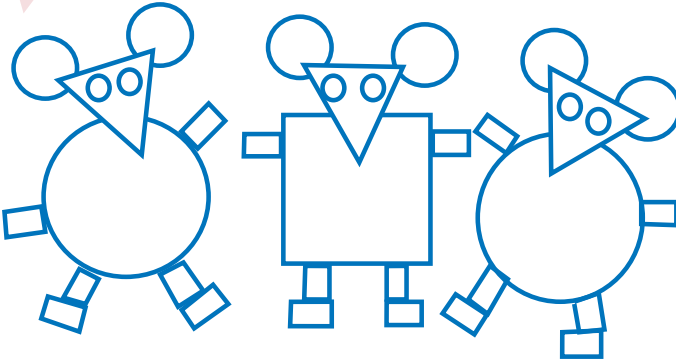
K	Y	U	G	U	P	A	I	N	S	A	R	G	V
S	E	L	T	G	T	Q	U	D	E	A	L	A	C
Y	I	S	E	V	B	F	M	I	M	L	H	K	N
G	B	P	M	I	A	V	M	D	T	F	L	R	F
R	Y	N	P	I	C	C	Q	P	G	O	D	E	E
O	S	M	T	J	L	Z	C	R	C	B	O	F	A
I	F	A	E	I	O	E	S	U	U	C	G	D	R
J	A	S	D	G	N	I	K	T	S	S	Y	M	A
A	L	K	F	M	S	D	F	C	J	E	U	Z	R
K	S	O	L	D	V	H	I	D	E	U	D	E	A
S	E	X	P	O	D	G	T	D	H	S	T	A	G
I	J	D	R	E	A	L	M	R	H	Q	L	R	V
R	E	S	Y	Z	T	N	B	K	A	G	F	E	S
S	B	U	H	B	H	O	N	E	S	T	P	R	D

DEAL
HIDE
FEAR
TEMPTED
GOD
REAL
HONEST
MASK
SMILE
KING
FALSE
RISK
ACCUSE
PAIN

4 JUST TRUST!

Luke 23:26-49

Count the figures and color

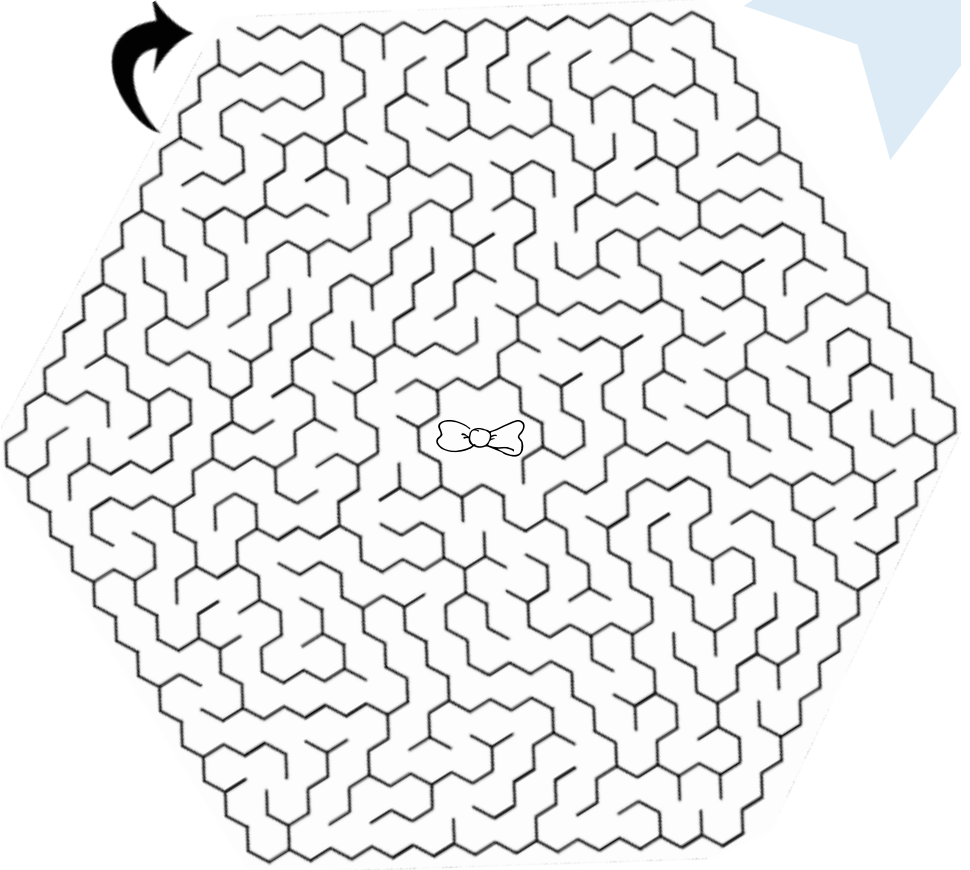


JESUS
DEATH
CROSS
PAIN
JUDGE
GUILTY
INNOCENT

ARREST
BEATEN
WHIPPED
NAILED
PUNISHMENT
SACRIFICE
HOPE

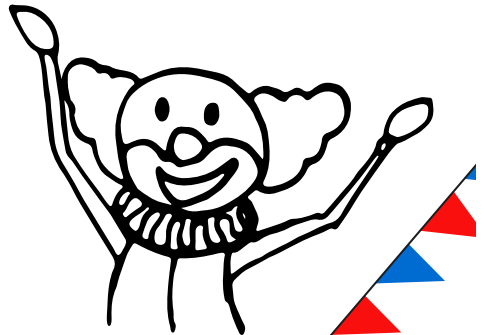


Get to the center of the
maze



MEMORIZE

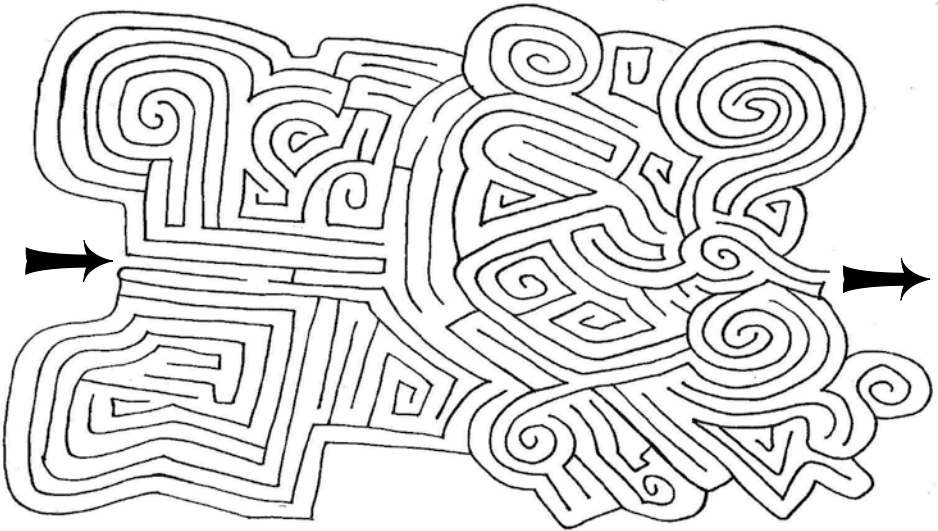
Psalm 118:8 (NIV)
"It is better to take
refuge in the Lord than
to trust in humans."



5 JUST LOVE!

Luke 24:1-12, 36-42

Find the way out of the maze.



Circle this figure if the answer is true.

Use this figure if the answer is false.



1. In the evening the women went to the tomb.



2. They found that the stone that covered the tomb had been rolled away.



3. Upon entering, they found the body of the Lord Jesus.

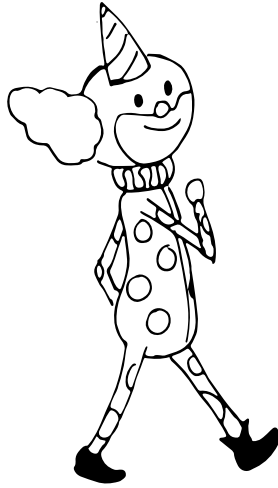
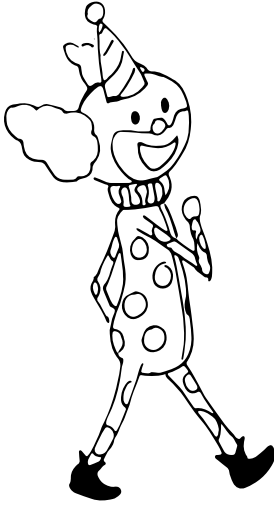


4. Peter, however, ran to the tomb.



5. Jesus appeared to all his disciples when they gathered.

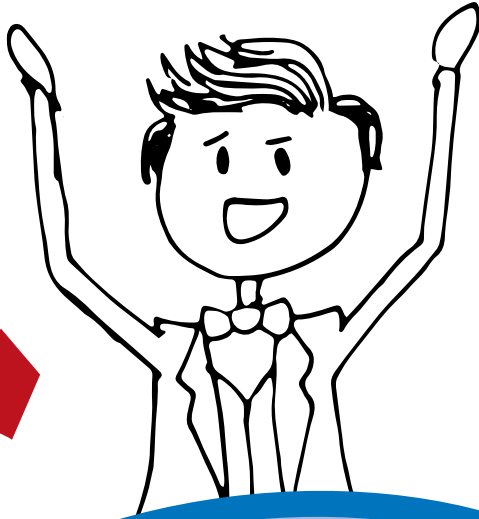
Find the 5 differences, and circle them.



MEMORIZE
 John 15:13 (NIV)
 "Greater love has no one
 than this: to lay down one's
 life for one's friends."

R	D	E	S	S	E	R	T	W	O	U	D
B	E	E	S	W	E	N	O	T	S	B	O
E	I	S	I	R	U	B	P	C	T	E	L
L	R	B	U	R	Y	E	E	V	O	L	L
E	U	C	C	R	C	P	T	S	N	I	E
I	B	S	A	C	R	I	F	I	C	E	G
V	S	G	A	I	N	E	W	O	N	V	N
J	T	R	U	S	T	O	C	O	V	E	A
E	Y	A	D	D	R	I	H	T	M	L	L
S	E	V	A	N	G	L	E	D	I	E	L
O	S	E	W	L	O	W	O	V	E	O	N
S	D	B	E	L	I	J	E	S	U	S	N

- JESUS
- DEAD
- GRAVE
- STONE
- ALIVE
- RESURRECTION
- LOVE
- SACRIFICE
- ACCEPT
- BELIEVE
- TRUST
- BURIED
- THIRD DAY
- WOMEN
- ANGEL



**"EVERY WORD OF GOD IS
AWLESS; HE IS A SHIELD TO
THOSE WHO TAKE REFUGE IN
HIM." PROVERBS 30:5 (NIV)**

Medium
Circus - English



www.childrenareimportant.com
info@ChildrenAreImportant.com
México: 01-800-839-1009
01-592-924-9041



Equip & Grow
Children are Important