

EASY
STUDENT

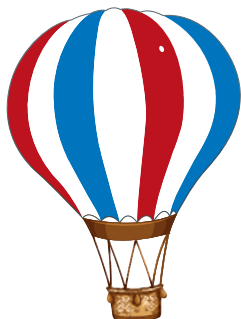
1 JUST BE HAPPY!

Luke 19:28-44

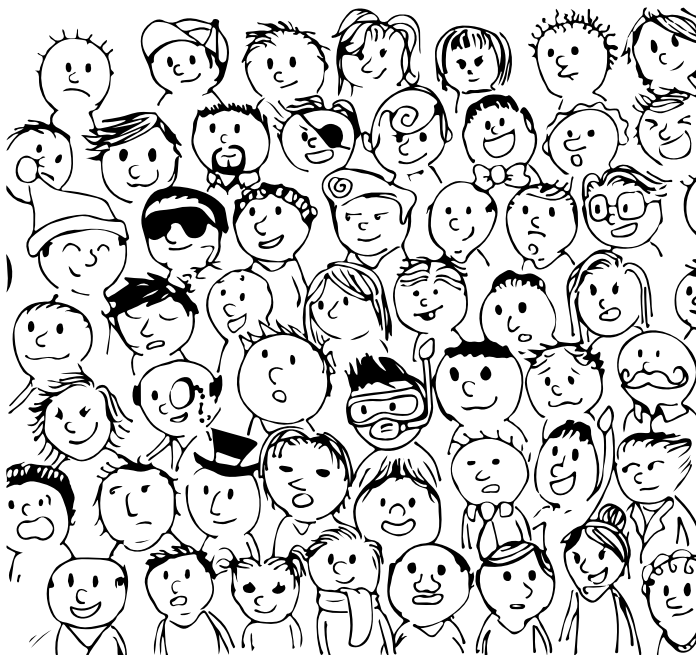
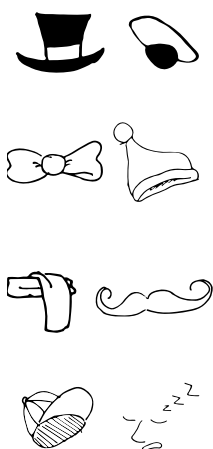
MEMORIZE

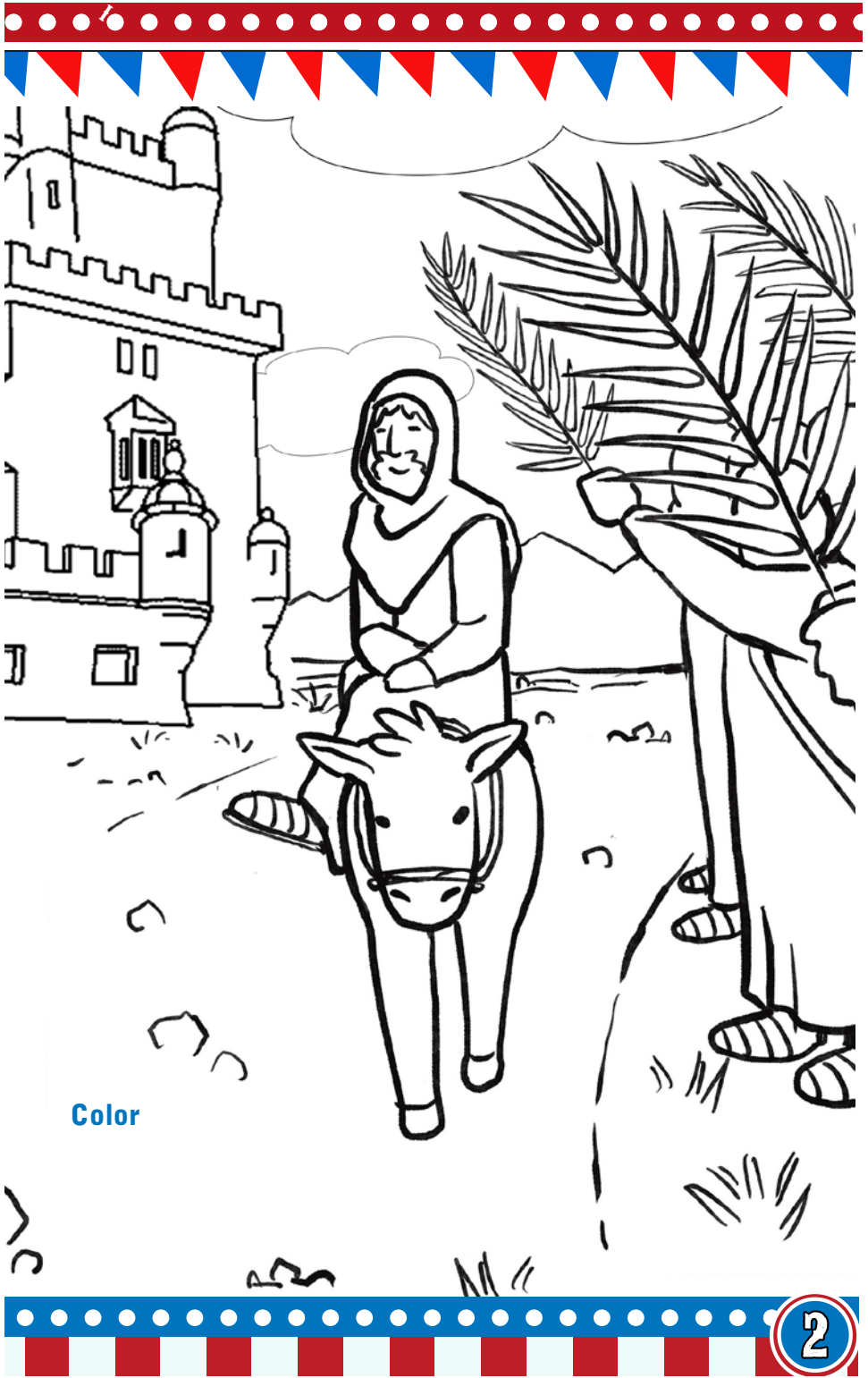
Proverbs 15:13 (NIV)

"A happy heart makes the face
cheerful, but heartache
crushes the spirit."



Find in the
public these
circus items.





Color

2

JUST DO IT!

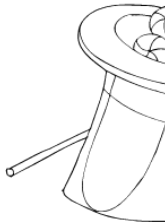
Luke 2:34, 54-62

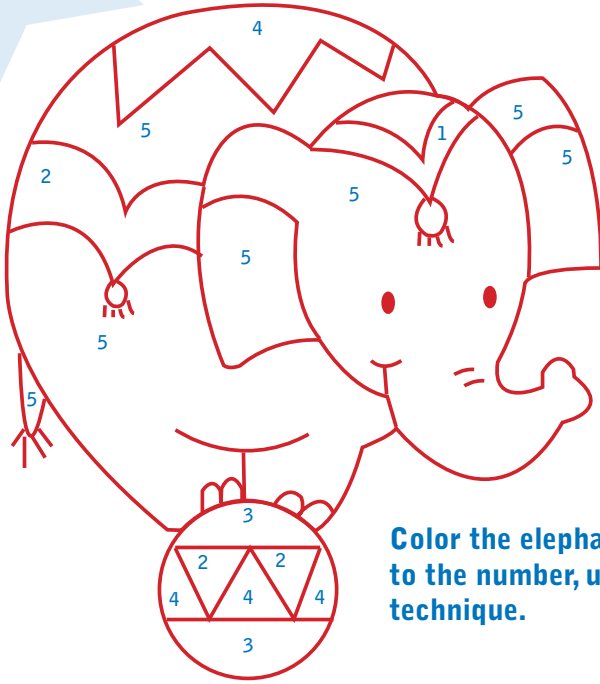
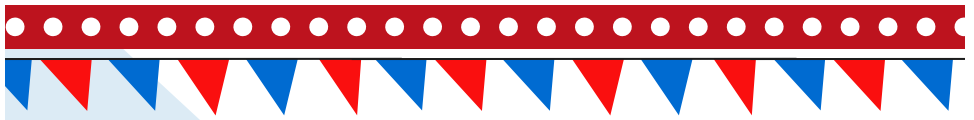
MEMORIZE

Proverbs 30:5 (NIV)

"Every word of God is
flawless; he is a shield to
those who take refuge in
him."

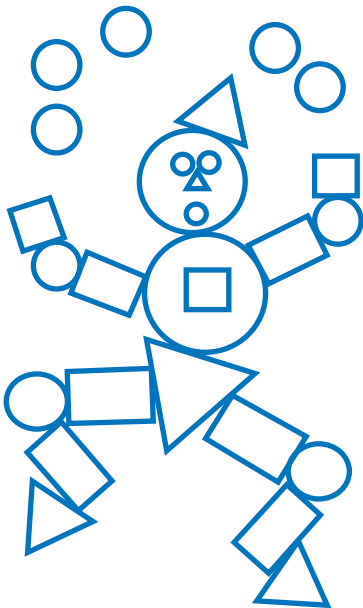
Connect the figures to
complete them





- 1= Yellow
- 2= Red
- 3= Green
- 4= Blue
- 5= Gray

Color the elephant according to the number, using a dotting technique.



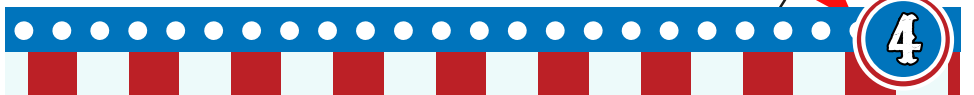
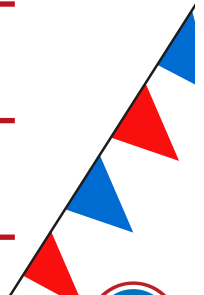
Count the figures and color them







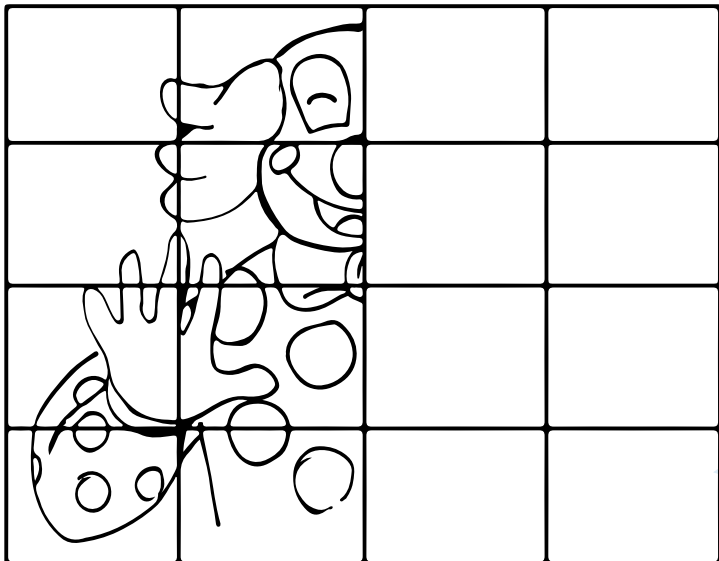




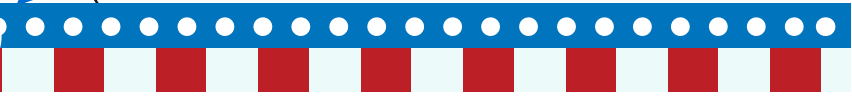
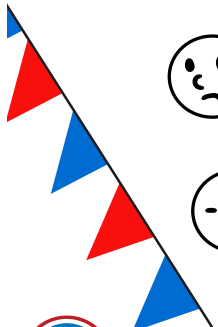
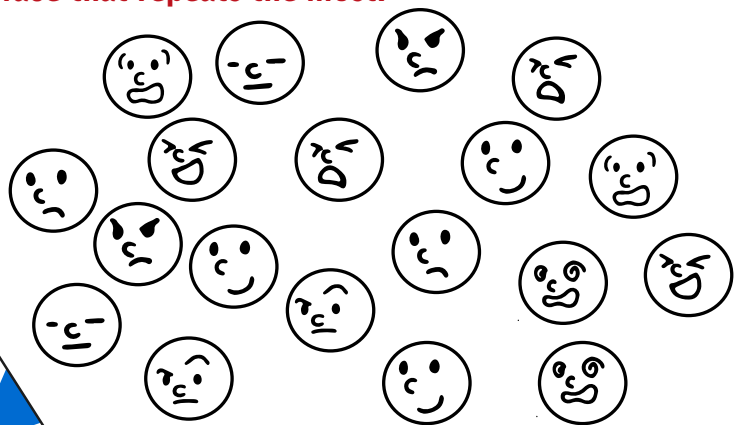
3 JUST BE YOU!

Luke 23:1-4, 13-16

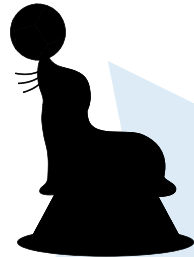
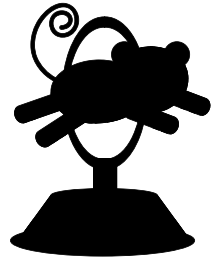
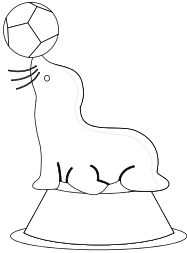
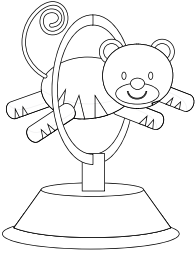
Draw the missing side of the clown.



Circle the face that repeats the most.



Connect the figures with their shadow with a line and color



MEMORIZE

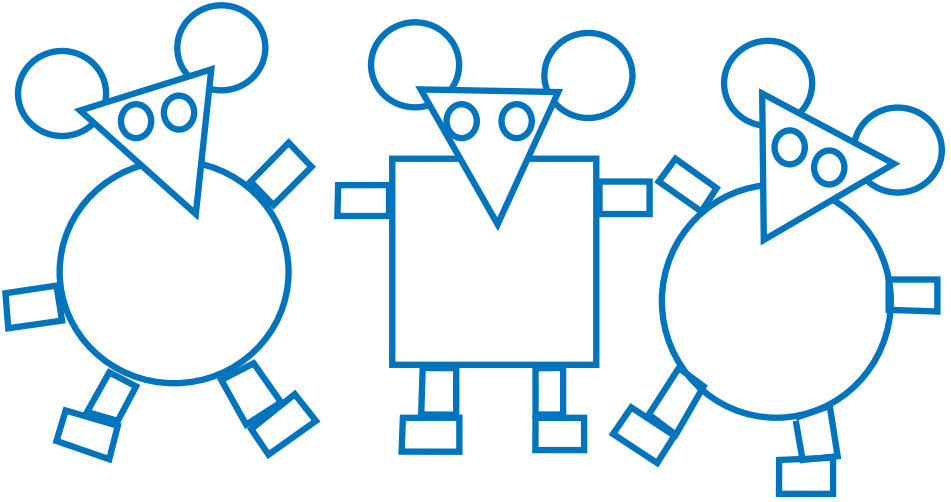
Isaiah 43:4 "Since you are precious and honored in my sight, and because I love you."



4 JUST TRUST!

Luke 23:26-49

Count the figures and color



_ _ _ _

MEMORIZE

Psalm 118:8 (NIV)
"It is better to take
refuge in the Lord than
to trust in humans."



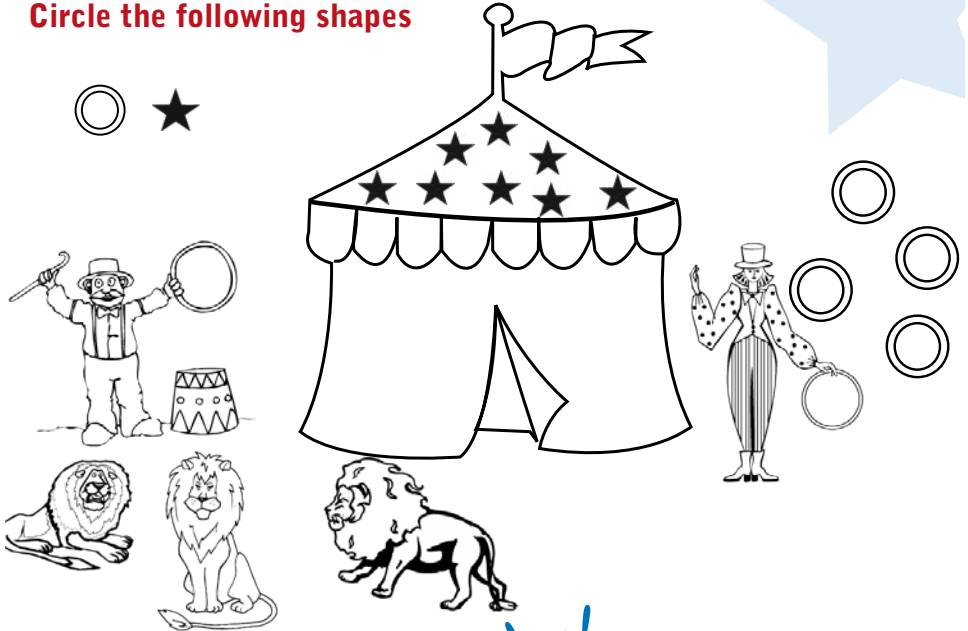
Color and find the following objects.



5 JUST LOVE!

Luke 24:1-12, 36-42

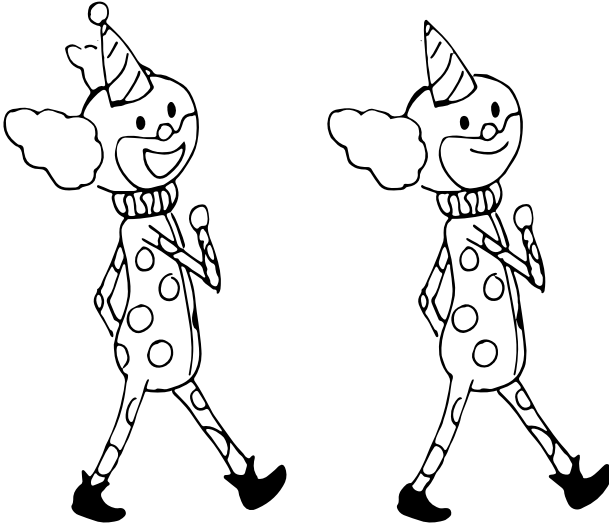
Circle the following shapes



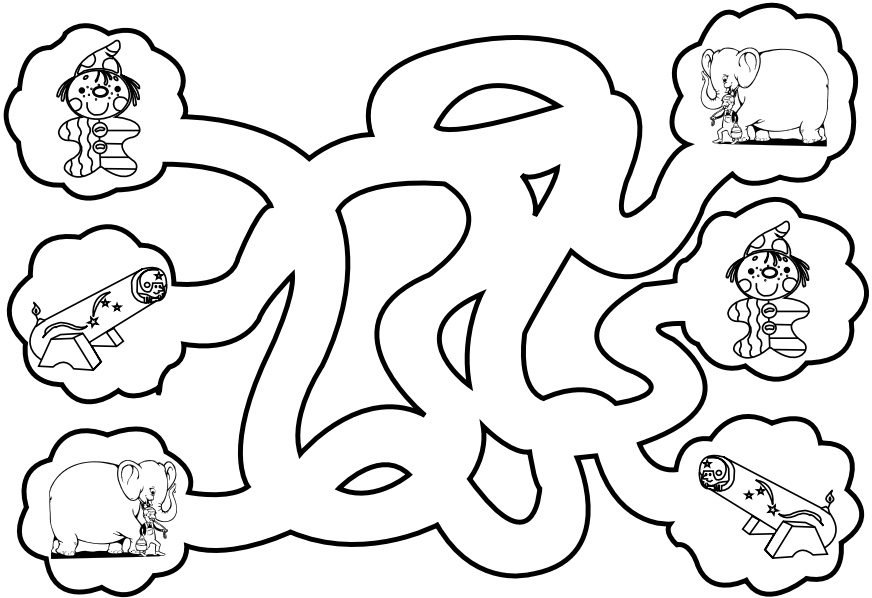
MEMORIZE

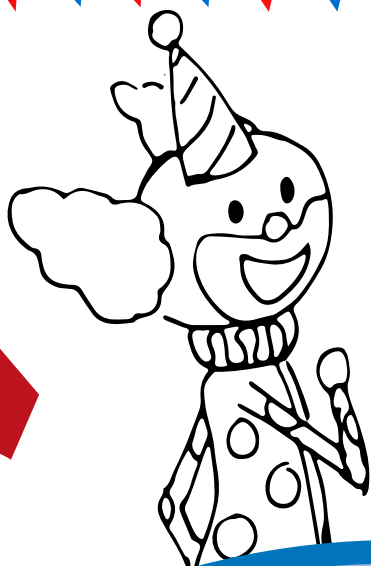
John 15:13 (NIV)
"Greater love has no one
than this: to lay down one's
life for one's friends."

Find the 5 differences, and circle them.



Connect the same figures through the maze.





**"EVERY WORD OF GOD IS
AWLESS; HE IS A SHIELD TO
THOSE WHO TAKE REFUGE IN
HIM." PROVERBS 30:5 (NIV)**

Easy
Circus - English



www.childrenareimportant.com
info@ChildrenAreImportant.com
México: 01-800-839-1009
01-592-924-9041



Equip & Grow
Children are Important