

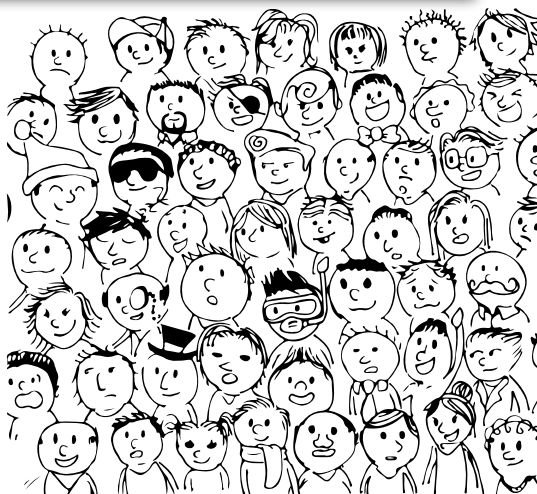
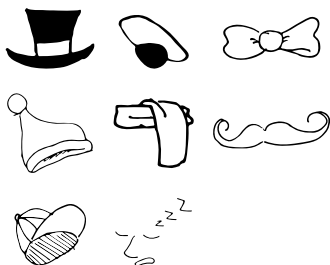


DIFFICULT
STUDENT

1 JUST BE HAPPY!

Luke 19:28-44

Find in the public these circus items.



D	O	N	K	E	E	C	P	I	G	H	O	R	S	E
T	E	E	T	H	G	O	P	P	E	N	Y	E	C	T
A	C	L	A	E	N	N	A	R	C	N	L	L	M	E
D	I	S	S	A	C	T	I	F	A	C	T	I	O	N
W	N	A	T	L	X	E	G	R	A	I	Q	R	D	O
O	I	T	U	I	Y	N	P	R	A	Z	S	O	Y	U
R	A	P	F	N	H	T	I	A	F	P	N	E	Q	G
S	L	R	F	G	Z	M	P	R	A	K	M	L	U	H
H	P	A	L	M	L	E	A	V	E	S	Z	O	P	T
I	M	Y	S	A	T	N	Z	Y	G	O	I	N	C	R
P	O	Q	U	W	I	T	N	E	S	S	O	U	G	H
T	C	S	N	O	I	S	S	E	S	S	O	P	I	E

DISSATISFACTION
ENOUGH
PALM LEAVES
ENTRY
DONKEY
COMPARING
CONTENTMENT
PRAISE
FAITH
COMPLAIN
POSSESSIONS
MIRACLES
HEALING
WITNESS



Find the way out of the maze.

MEMORIZE

Proverbs 15:13 (NIV)

"A happy heart makes the face
cheerful, but heartache
crushes the spirit."

2

JUST DO IT!

Luke 2:34, 54-62

R	Z	K	F	U	N	E	Q	D	Z
A	W	A	T	E	R	S	G	O	D
F	I	A	J	U	A	P	F	W	G
T	T	G	L	S	C	R	A	N	K
S	H	I	N	K	B	A	I	Z	W
A	A	U	R	I	X	K	T	I	E
F	H	Y	B	Q	N	Y	H	P	T
E	G	L	Y	I	M	W	E	A	R
Y	E	O	S	I	N	K	O	T	Y
W	J	E	S	U	S	B	K	R	W
S	T	R	O	L	L	I	N	G	D

JOY
FAITH
WALK
WATER
FEAR
FAILURE
SAFE
BOAT
BIBLE
TRY
WET
SINKING
DROWNING
JESUS

There is a number that does not repeat. Which?

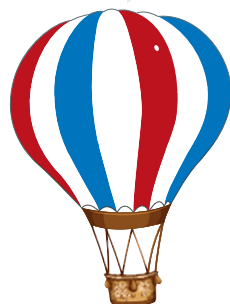
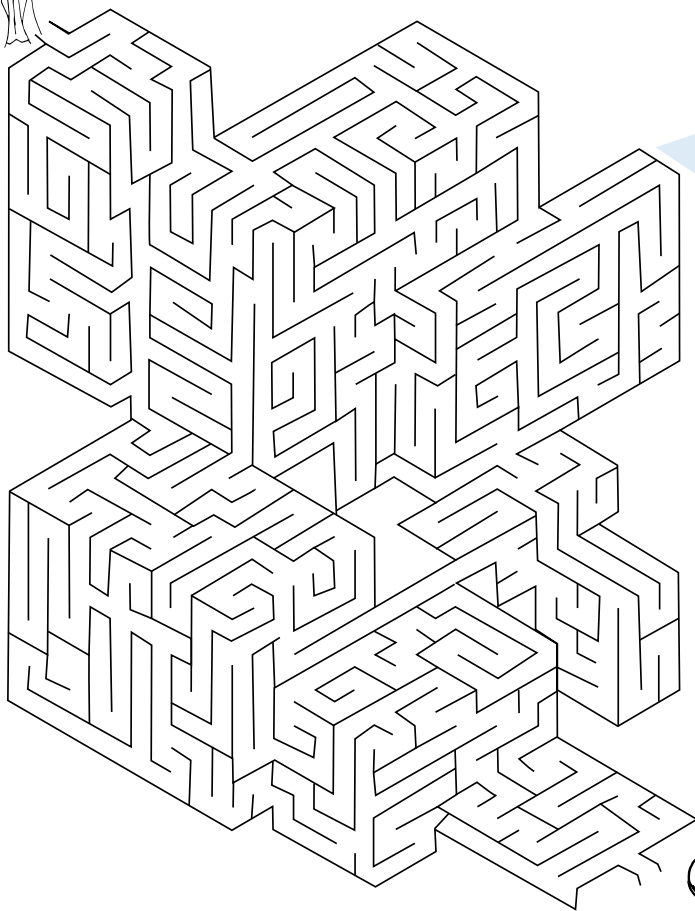
There is a number that is repeated three times, what is it?

There is a number that is repeated the most times, what is it?

3	12	2	4	9	5	1	7
12	5	8	6	7	3	13	9
8	1	3	10	4	2	12	6
6	3	2	5	2	1	2	4
4	11	8	2	6	12	3	5
9	2	7	3	5	4	6	8
7	4	9	7	1	5	2	10
10	5	4	11	3	6	9	2



Find the way out of the maze.



MEMORIZE

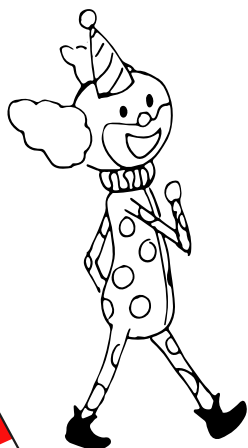
Proverbs 30:5 (NIV)
"Every word of God is
flawless; he is a shield to
those who take refuge in him."

3 JUST BE YOU!

Luke 23:1-4, 13-16

K	Y	U	G	U	P	A	I	N	S	A	R	G	V
S	E	L	T	G	T	Q	U	D	E	A	L	A	C
Y	I	S	E	V	B	F	M	I	M	L	H	K	N
G	B	P	M	I	A	V	M	D	T	F	L	R	F
R	Y	N	P	I	C	C	Q	P	G	O	D	E	E
O	S	M	T	J	L	Z	C	R	C	B	O	F	A
I	F	A	E	I	O	E	S	U	U	C	G	D	R
J	A	S	D	G	N	I	K	T	S	S	Y	M	A
A	L	K	F	M	S	D	F	C	J	E	U	Z	R
K	S	O	L	D	V	H	I	D	E	U	D	E	A
S	E	X	P	O	D	G	T	D	H	S	T	A	G
I	J	D	R	E	A	L	M	R	H	Q	L	R	V
R	E	S	Y	Z	T	N	B	K	A	G	F	E	S
S	B	U	H	B	H	O	N	E	S	T	P	R	D

DEAL
HIDE
FEAR
TEMPTED
GOD
REAL
HONEST
MASK
SMILE
KING
FALSE
RISK
ACCUSE
PAIN



MEMORIZE

Isaiah 43:4 "Since you are precious and honored in my sight, and because I love you."

Help the mime find his beret.

A 7x12 grid of red and blue squares. Arrows indicate movement directions: up, down, left, and right. A mime character is on the left side, and a beret is on the right side. The path starts at the top-left square (row 1, col 1) and ends at the bottom-right square (row 7, col 12).

Help the clown to wash his face of makeup following the numbers 3 by 3. From 3 to 54.



A hexagonal grid containing numbers from 3 to 54. The numbers are arranged in a pattern that allows for a continuous path starting at 3 and ending at 54. A bottle of soap is at the bottom.

3	2	5	15	18	19	
4	6	9	12	13	21	22
5	7	8	25	20	24	
35	45	42	39	36	29	27
48	44	38	34	33	30	
49	51	47	36	31	28	32
54						

4 JUST TRUST!

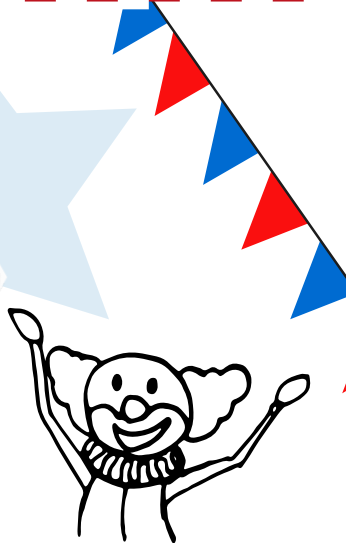
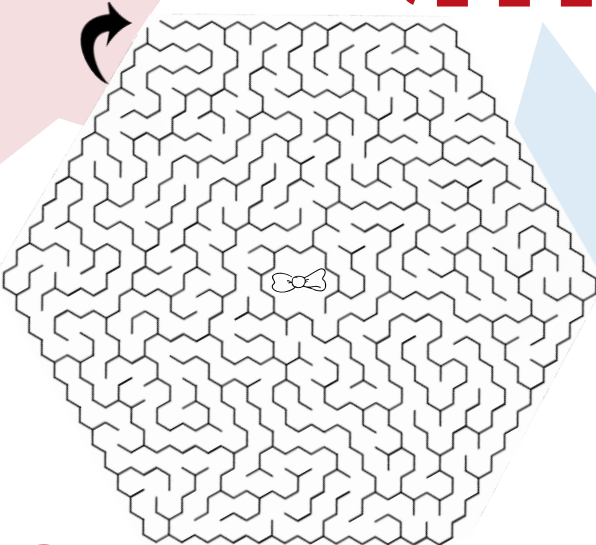
Luke 23:26-49

JESUS
DEATH
CROSS
PAIN
JUDGE
GUILTY
INNOCENT

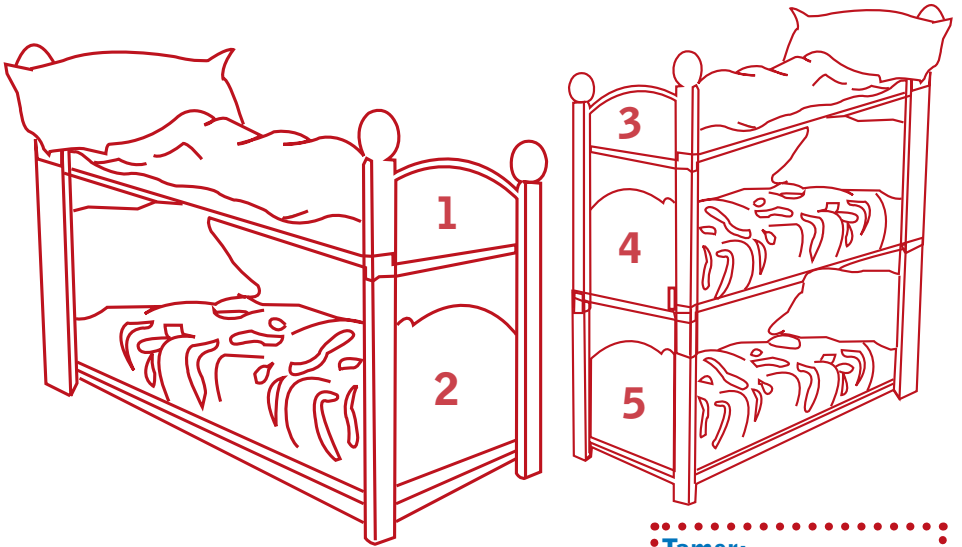
ARREST
BEATEN
WHIPPED
NAILED
PUNISHMENT
SACRIFICE
HOPE

I	Y	H	N	A	R	R	E	S	T
B	N	I	O	S	S	W	B	N	W
E	A	N	G	P	H	L	E	R	H
P	I	W	O	T	E	M	A	Y	I
J	L	S	A	C	H	R	T	C	P
E	E	E	U	S	E	L	E	S	P
S	D	Y	I	S	I	N	N	S	E
N	L	N	W	U	E	Y	T	O	D
A	U	E	G	D	U	J	D	R	J
P	S	A	C	R	I	F	I	C	E

Get to the center of the maze



In the circus bedroom, there are 5 beds where a clown, a juggler, a trapeze artist, a trainer, and the circus owner sleep.
Nobody sleeps on top of the bed of the circus owner or the juggler.
Nobody sleeps under the trapeze artist's bed, but on top is the circus owner's bed.
The clown's bed is under the juggler's bed, but above the tamer's bed.

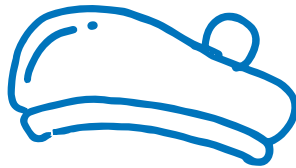


In which bed does each character sleep? Write the corresponding number.

Tamer:
Circus owner:
Juggler:
Clown:
Trapeze artist:

MEMORIZE

Psalm 118:8 (NIV)
"It is better to take
refuge in the Lord than
to trust in humans."



5 JUST LOVE!

Luke 24:1-12, 36-42

There is one left over! Mark the correct answer.

1)



2)



3)



4)



5)

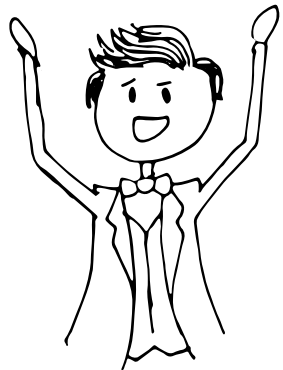


Two clowns bought an ice cream cone for each one. They also bought one for the presenter and another for the owner of the circus. The clown's ice cream has the same flavor, the presenter's is at one end and the circus owner's is at the other. What ice cream is left over?

MEMORIZE

John 15:13 (NIV)

"Greater love has no one than this: to lay down one's life for one's friends."



Circle this figure if the answer is true.



Use this figure if the answer is false.



1. In the evening the women went to the tomb.



2. They found that the stone that covered the tomb had been rolled away.



3. Upon entering, they found the body of the Lord Jesus.



4. Peter, however, ran to the tomb.



5. Jesus appeared to all his disciples when they gathered.



R	D	E	S	S	E	R	T	W	O	U	D
B	E	E	S	W	E	N	O	T	S	B	O
E	I	S	I	R	U	B	P	C	T	E	L
L	R	B	U	R	Y	E	E	V	O	L	L
E	U	C	C	R	C	P	T	S	N	I	E
I	B	S	A	C	R	I	F	I	C	E	G
V	S	G	A	I	N	E	W	O	N	V	N
J	T	R	U	S	T	O	C	O	V	E	A
E	Y	A	D	D	R	I	H	T	M	L	L
S	E	V	A	N	G	L	E	D	I	E	L
O	S	E	W	L	O	W	O	V	E	O	N
S	D	B	E	L	I	J	E	S	U	S	N

JESUS
DEAD
GRAVE
STONE
ALIVE
RESURRECTION
LOVE
SACRIFICE
ACCEPT
BELIEVE
TRUST
BURIED
THIRD DAY
WOMEN
ANGEL



**"EVERY WORD OF GOD IS
AWFUL; HE IS A SHIELD TO
THOSE WHO TAKE REFUGE IN
HIM." PROVERBS 30:5 (NIV)**

Difficult
Circus - English



80031

www.childrenareimportant.com
info@ChildrenAreImportant.com
México: 01-800-839-1009
01-592-924-9041



Equip & Grow
Children are Important